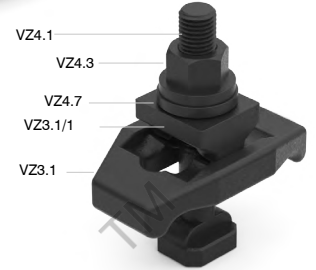
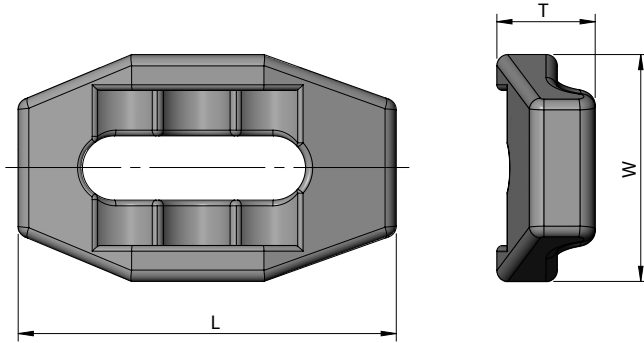


VZ3.1

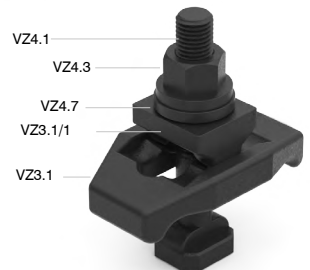
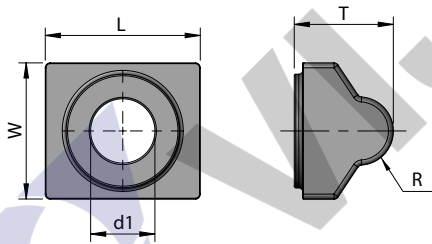
Raw Material: S45 C



Code	Size	L	W	T	Stock
VZ3.1/ 001	M16 (12~16)	100	60	26	•
VZ3.1/ 002	M16 (14~16)	130	70	36	•
VZ3.1/ 003	M16 (14~16)	150	77	42	•
VZ3.1/ 004	M16 (14~16)	150	90	52	•
VZ3.1/ 005	M20 (18~20)	130	70	36	•
VZ3.1/ 006	M20 (18~20)	150	77	42	•
VZ3.1/ 007	M20 (18~20)	150	90	52	•
VZ3.1/ 008	M20 (18~20)	170	90	42	•
VZ3.1/ 009	M24 (22~24)	150	77	42	•
VZ3.1/ 010	M24 (22~24)	150	90	52	•
VZ3.1/ 011	M24 (22~24)	170	90	42	•
VZ3.1/ 012	M30 (27~30)	200	130	85	•

✓ - Ex-stock • - Against Order | Ordering Example: Code - Quantity | VZ3.1/ 012 - 4 Pcs

VZ3.1/1
Pivot Washer



Code	Size	d1	L	W	T	R	Stock
VZ3.1/1/ 001	M16 (12~16)	17	41	36	24	9	•
VZ3.1/1/ 002	M16 (14~16)	17	48	40	27	9	•
VZ3.1/1/ 003	M16 (14~16)	17	55	43			•
VZ3.1/1/ 004	M20 (18~20)	21	48	40	27	9	•
VZ3.1/1/ 005	M20 (18~20)	21	55	43			•
VZ3.1/1/ 006	M20 (18~20)	21	55	43			•
VZ3.1/1/ 007	M24 (22~24)	25	55	43			•
VZ3.1/1/ 008	M24 (22~24)	25	55	43	40	12	•
VZ3.1/1/ 009	M30 (27~30)	32	80	70			•

✓ - Ex-stock • - Against Order | Ordering Example: Code - Quantity | VZ3.1/1/ 009 - 4 Pcs