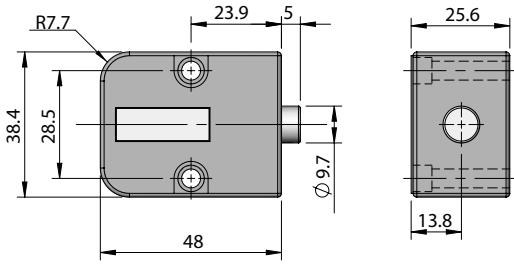


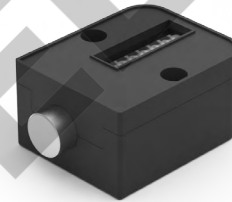
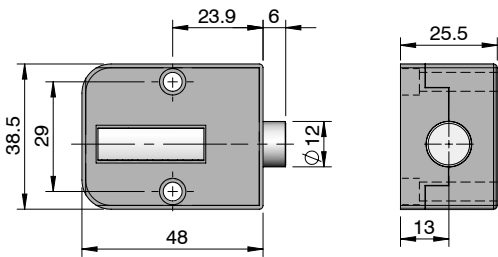
VK14.1
Mechanical



Code	Screw Size	Maximum Working Temperature	Stock
VK14.1 (Metric)	M4 X 0.7 X 25	120°C	✓

✓ - Ex-stock • - Against Order | Ordering Example: Code - Quantity | VK14.1 - 5 Pcs

VK14.2
Mechanical High Temperature

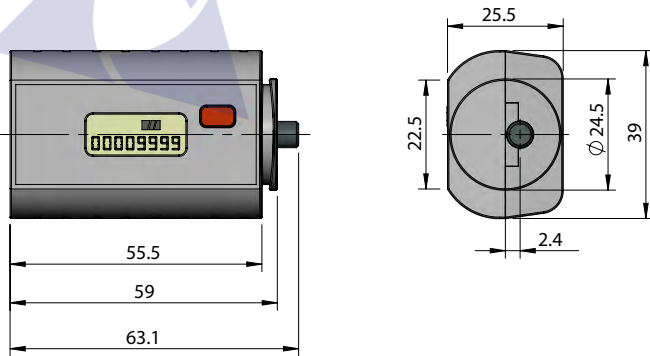


◆ Note: High temperature mould counter should be installed outside the mould with insulation plate.

Code	Screw Size	Maximum Working Temperature	Stock
VK14.2 (Metric)	M4 X 0.7 X 25	160°C	•

✓ - Ex-stock • - Against Order | Ordering Example: Code - Quantity | VK14.2 - 5 Pcs

VK14.3
Digital



Code	Screw Size	Maximum Working Temperature	Stock
VK14.3 (Metric)	M4 X 0.7 X 25	85°C	•

✓ - Ex-stock • - Against Order | Ordering Example: Code - Quantity | VK14.3 - 5 Pcs