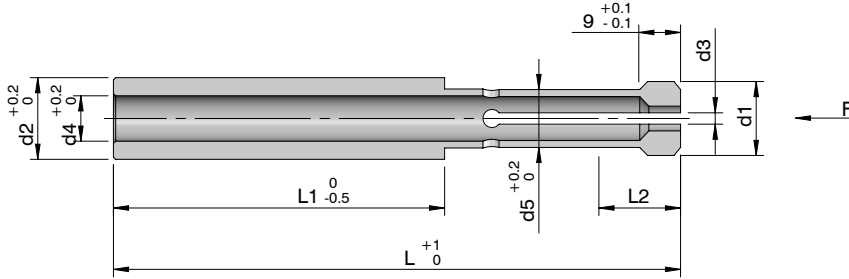


VE9.1

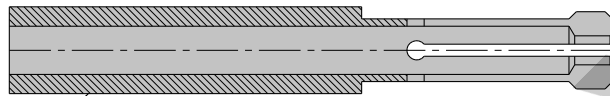
Pressure Sleeve

Raw Material: Hot Die Steel (H13)
 Hardness: Surface : 54-58 HRC(For a distance L2)
 Core: 43-47 HRC

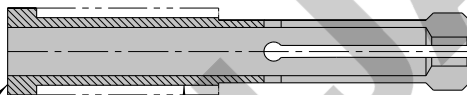


Code	d1	d2	d3	d4	d5	L	L1	L2	Max.F [N]	Stock
VE9.1/ 001	16	18	6	10	13	125	73	20	12,000	•
VE9.1/ 002	20	24	10	12.5	17	160	100	25	20,000	•

✓ - Ex-stock • - Against Order | Ordering Example: Code - Quantity | VE9.1/ 002 - 8 Pcs



Pressure Sleeve as Supplied



Cut the back of the sleeve to get the required length

Grind down this diameter to create a head

Pressure Sleeve For Early Ejector:
 Pressure Sleeve provides a positive early return system.

It acts as a collet and squeezes the mouth as it enters the bush, when the ejector system goes forward, the push back pin pushes the pressure sleeve back effectively returning the ejector system prior to the mould closing.

The Push Back Pin then enters the opened collet mouth of the pressure sleeve allowing the mouth to close

