

VE2.1

Type C DIN 1530 (Stepped)

Raw Material: Through Hardened & Ground Steel

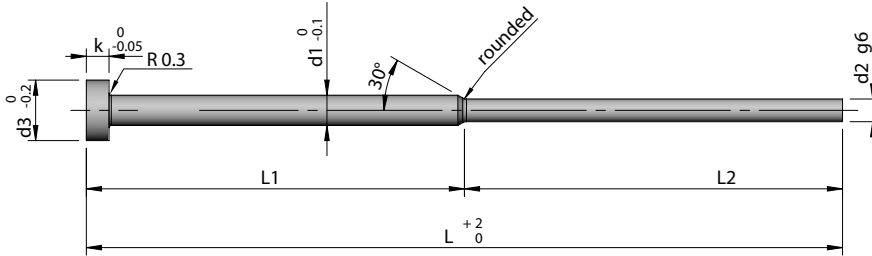
Hardness: 50-54 HRC

Recommended for Plastic moulds.

Raw Material: Hot Die Steel (H-11/H-13)

Hardness: Surface Nitrided to 60-62 HRC Core 45-50 HRC

Recommended for high temperature moulds and die casting dies.



Through Hardened	Stock	Nitrided (HDS)	Stock	d1	d2	d3	k	L	L1	L2
VE2.1/ 001 - T	✓	VE2.1/ 001 - H	✓	3	1	6	3	100	50	50
VE2.1/ 002 - T	✓	VE2.1/ 002 - H	✓					125	50	75
VE2.1/ 003 - T	✓	VE2.1/ 003 - H	✓					160	75	85
VE2.1/ 004 - T	✓	VE2.1/ 004 - H	✓					200	75	125
VE2.1/ 005 - T	✓	VE2.1/ 005 - H	✓	3	1.5	6	3	100	50	50
VE2.1/ 006 - T	✓	VE2.1/ 006 - H	✓					125	50	75
VE2.1/ 007 - T	✓	VE2.1/ 007 - H	✓					160	75	85
VE2.1/ 008 - T	✓	VE2.1/ 008 - H	✓					200	75	125
VE2.1/ 009 - T	✓	VE2.1/ 009 - H	✓	3	2	6	3	100	50	50
VE2.1/ 010 - T	✓	VE2.1/ 010 - H	✓					125	50	75
VE2.1/ 011 - T	✓	VE2.1/ 011 - H	✓					160	75	85
VE2.1/ 012 - T	✓	VE2.1/ 012 - H	✓					200	75	125
VE2.1/ 013 - T	✓	VE2.1/ 013 - H	✓	3	2.5	6	3	100	50	50
VE2.1/ 014 - T	✓	VE2.1/ 014 - H	✓					125	50	75
VE2.1/ 015 - T	✓	VE2.1/ 015 - H	✓					160	75	85
VE2.1/ 016 - T	✓	VE2.1/ 016 - H	✓					200	75	125
VE2.1/ 017 - T	•	VE2.1/ 017 - H	•	4	3	8	3	100	50	50
VE2.1/ 018 - T	•	VE2.1/ 018 - H	•					125	50	75
VE2.1/ 019 - T	•	VE2.1/ 019 - H	•					160	75	85
VE2.1/ 020 - T	•	VE2.1/ 020 - H	•					200	75	125

✓ - Ex-stock • - Against Order | Ordering Example: Code - Quantity | VE2.1/ 020 - T - 20 Pcs

◆ **Note:** Customised Sizes & DLC coated pins are available on request

VE