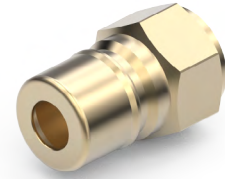
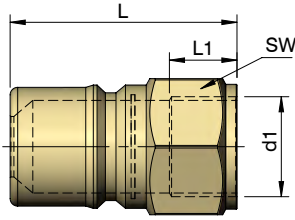


**VJ4.6**

**For Manifold**  
Raw Material: Brass



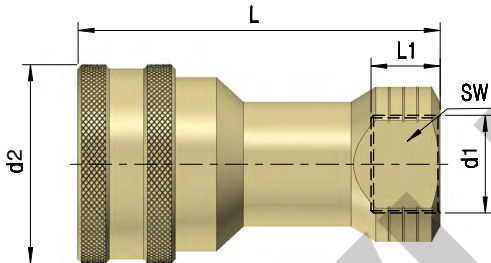
Code		d1	L	L1	SW	Brass NBR -20°C + 100°C -40°F + 250°F Pressure at 50°C(120°F)	Stainless steel FPM - 15°C + 180°C 5°F + 356°F Pressure at		Stock
Through Hole Type	Shut-Off Valve Type						50°C (120°F)	180°C (356°F)	
VJ4.6/ 001	VJ4.6/ 001 - V	1/8" BSP	30	7	14	250 bar	250 bar	190 bar	•
VJ4.6/ 002	VJ4.6/ 002 - V	1/4" BSP	35	10	19	250 bar	250 bar	190 bar	•
VJ4.6/ 003	VJ4.6/ 003 - V	3/8" BSP	39	12	22	250 bar	250 bar	190 bar	•
VJ4.6/ 004	VJ4.6/ 004 - V	1/2" BSP	46	15	28	150 bar	250 bar	190 bar	•
VJ4.6/ 005	VJ4.6/ 005 - V	3/4" BSP	60	17	36	100 bar	160 bar	120 bar	•
VJ4.6/ 006	VJ4.6/ 006 - V	1" BSP	65	20	41	100 bar	100 bar	75 bar	•
VJ4.6/ 007	VJ4.6/ 007 - V	1 1/4" BSP	70	24	54	50 bar	50 bar	40 bar	•
VJ4.6/ 008	VJ4.6/ 008 - V	1 1/2" BSP	80	24	58	40 bar	40 bar	30 bar	•
VJ4.6/ 009	VJ4.6/ 009 - V	2" BSP	80	27	77	20 bar	20 bar	15 bar	•

✓ - Ex-stock • - Against Order | Ordering Example: Code - Quantity | VJ4.6/ 009 - 5 Pcs

**Quick Change Socket**

**VJ4.7**

**For Manifold**  
Raw Material: Brass



Code		d1	d2	L	L1	SW	Brass Nitrile -20°C + 100°C Pressure at	Stainless steel Viton -15°C + 180°C Pressure at		Stock
Through Hole Type	Shut-Off Valve Type							50°C	180°C	
VJ4.7/ 001	VJ4.7/ 001 - V	1/8" BSP	25	49	7	14	250 bar	250 bar	190 bar	•
VJ4.7/ 002	VJ4.7/ 002 - V	1/4" BSP	29	58	10	19	250 bar	250 bar	190 bar	•
VJ4.7/ 003	VJ4.7/ 003 - V	3/8" BSP	35	64	12	24	200 bar	250 bar	190 bar	•
VJ4.7/ 004	VJ4.7/ 004 - V	1/2" BSP	44	74	15	29	150 bar	250 bar	190 bar	•
VJ4.7/ 005	VJ4.7/ 005 - V	3/4" BSP	53	94	17	36	100 bar	160 bar	120 bar	•
VJ4.7/ 006	VJ4.7/ 006 - V	1" BSP	60	106	20	41	100 bar	100 bar	75 bar	•
VJ4.7/ 007	VJ4.7/ 007 - V	1.1/4" BSP	73	114	24	54	50 bar	50 bar	40 bar	•
VJ4.7/ 008	VJ4.7/ 008 - V	1.1/2" BSP	87	138	24	58	40 bar	40 bar	30 bar	•
VJ4.7/ 009	VJ4.7/ 009 - V	2" BSP	94	142	27	77	20 bar	20 bar	15 bar	•

✓ - Ex-stock • - Against Order | Ordering Example: Code - Quantity | VJ4.7/ 009 - 5 Pcs