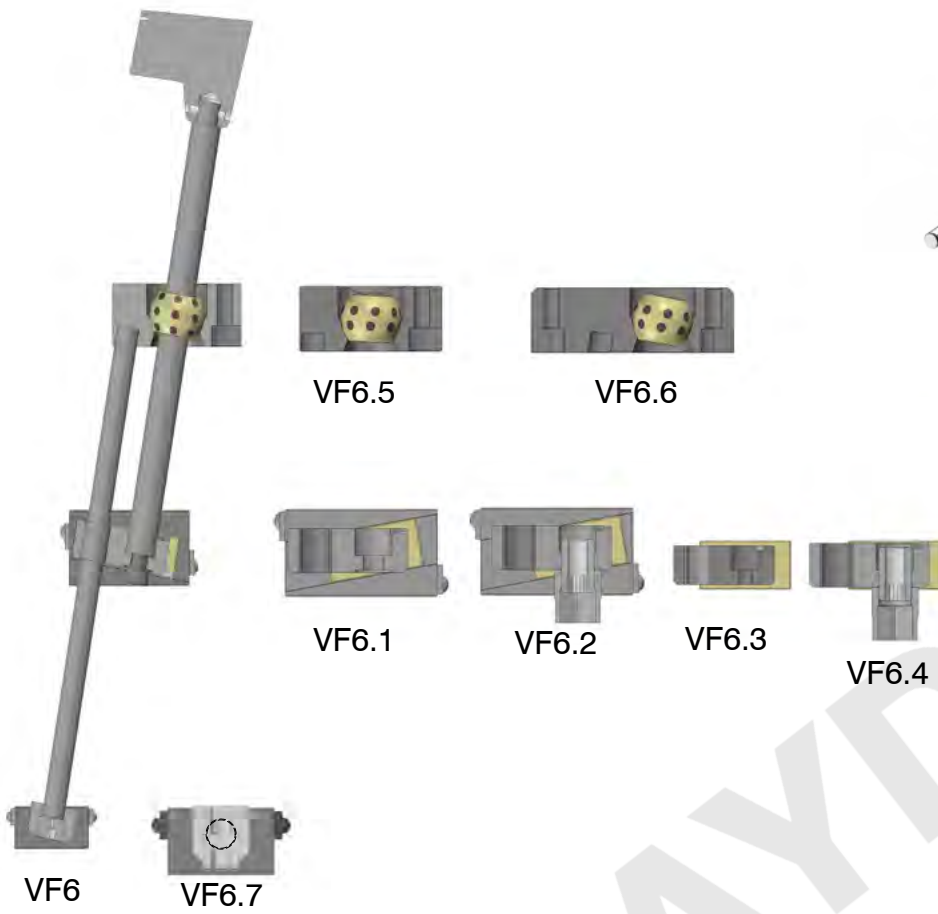
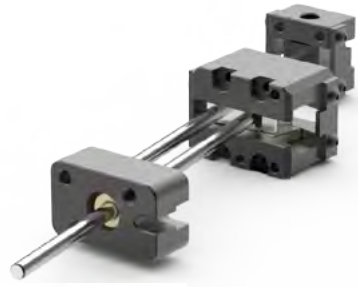
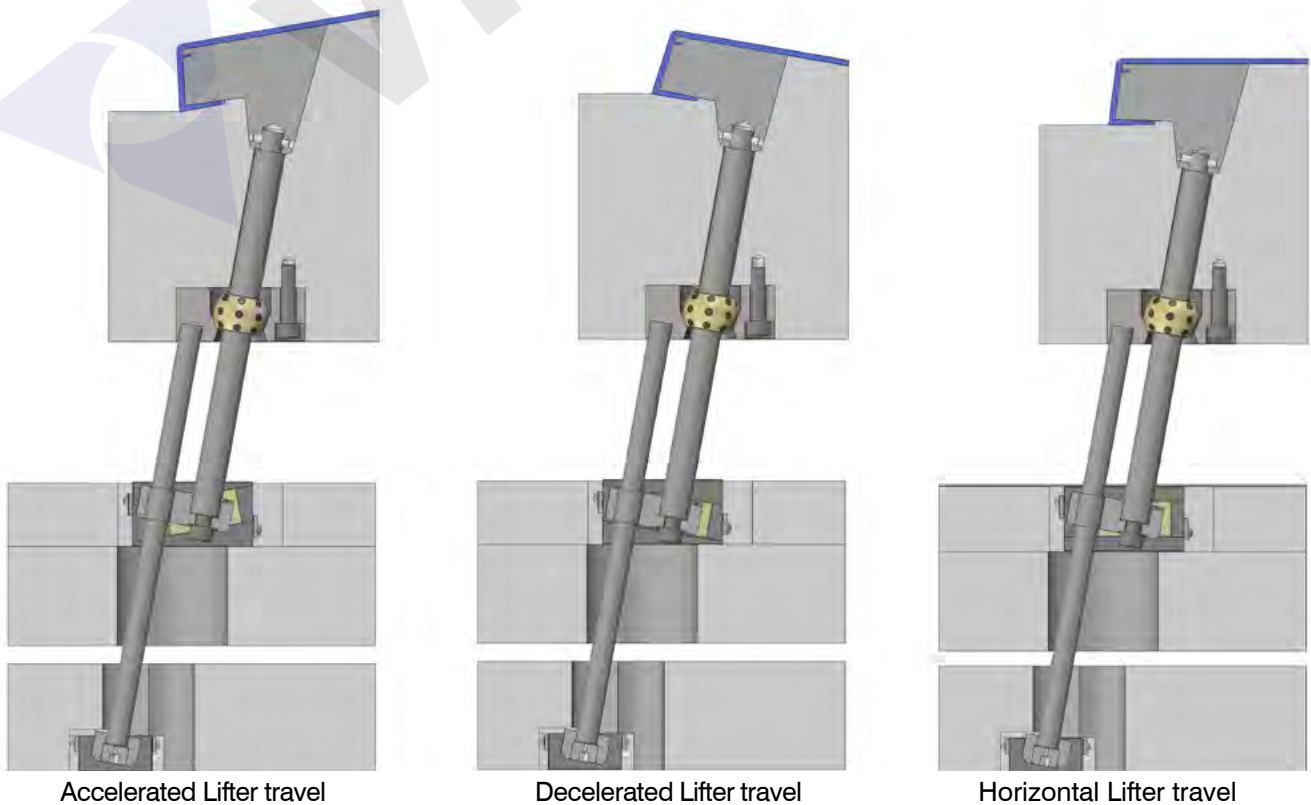


VF6



Note:
 VF6 Universal Lifter is designed to release undercuts at steeper angles. The system uses a guide rod which takes away the angular load from the lifting rod. Universal nature of the lifter base and the rod guide unit, allows to design a lifting angle up to 20° with acceleration and deceleration as required to release the undercut. Configure your own lifter assembly. Select the components from the following pages to suit your requirement. Acceleration and Deceleration angles up to 10° are standard. Acceleration and Deceleration angles from 10° to 20° are possible where T-dimension will increase by 10mm.

VF



Accelerated Lifter travel

Decelerated Lifter travel

Horizontal Lifter travel