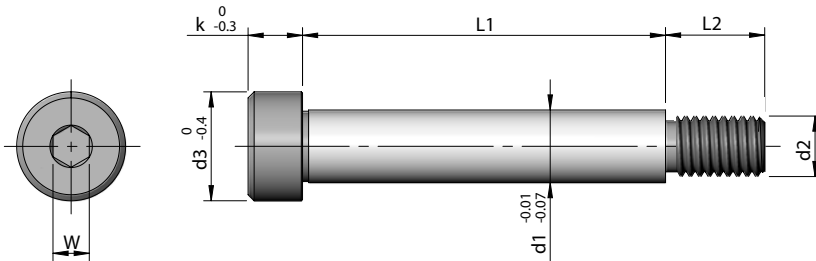


VC2.1

Raw Material:	Alloy Steel
Hardness:	38-44 HRC
Standard :	As Per ISO-7379-1983
Surface Treatment :	Black Oxide
Class of Thread :	5g6g



VC

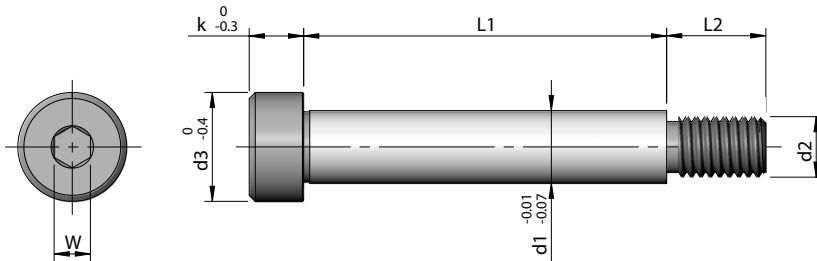
Code	d1	d2	d3	W	L1	L2	k	Stock
VC2.1/ 001	6	M5	10	3	10	10	4.5	●
VC2.1/ 002					15			●
VC2.1/ 003					20			●
VC2.1/ 004					25			●
VC2.1/ 005					30			●
VC2.1/ 006					35			●
VC2.1/ 007					40			●
VC2.1/ 008					45			●
VC2.1/ 009					50			●
VC2.1/ 010					8			M6
VC2.1/ 011	15	●						
VC2.1/ 012	20	●						
VC2.1/ 013	25	●						
VC2.1/ 014	30	●						
VC2.1/ 015	35	●						
VC2.1/ 016	40	●						
VC2.1/ 017	45	●						
VC2.1/ 018	50	●						
VC2.1/ 019	55	●						
VC2.1/ 020	60	●						
VC2.1/ 021	65	●						
VC2.1/ 022	70	●						
VC2.1/ 023	75	●						
VC2.1/ 024	80	●						
VC2.1/ 025	10	M8	16	5	20	13	7	●
VC2.1/ 026					25			●
VC2.1/ 027					30			●
VC2.1/ 028					35			●
VC2.1/ 029					40			●
VC2.1/ 030					45			●
VC2.1/ 031					50			●
VC2.1/ 032					55			●
VC2.1/ 033					60			●

Code	d1	d2	d3	W	L1	L2	k	Stock						
VC2.1/ 034	10	M8	16	5	65	13	7	●						
VC2.1/ 035					70			●						
VC2.1/ 036					75			●						
VC2.1/ 037					80			●						
VC2.1/ 038					85			●						
VC2.1/ 039					90			●						
VC2.1/ 040					95			●						
VC2.1/ 041					100			●						
VC2.1/ 042					12			M10	18	6	20	16	9	●
VC2.1/ 043											25			●
VC2.1/ 044	30	●												
VC2.1/ 045	35	●												
VC2.1/ 046	40	●												
VC2.1/ 047	45	●												
VC2.1/ 048	50	●												
VC2.1/ 049	55	●												
VC2.1/ 050	60	●												
VC2.1/ 051	65	●												
VC2.1/ 052	70	●												
VC2.1/ 053	75	●												
VC2.1/ 054	80	●												
VC2.1/ 055	85	●												
VC2.1/ 056	90	●												
VC2.1/ 057	95	●												
VC2.1/ 058	100	●												
VC2.1/ 059	105	●												
VC2.1/ 060	110	●												
VC2.1/ 061	115	●												
VC2.1/ 062	120	●												
VC2.1/ 063	16	M12	24	8	30	18	11	●						
VC2.1/ 064					35			●						
VC2.1/ 065					40			●						
VC2.1/ 066					45			●						

✓ - Ex-stock ● - Against Order | Ordering Example: Code - Quantity | VC2.1/ 033 - 20 Pcs | Min. order qty: 4 pcs

VC2.1

Raw Material:	Alloy Steel
Hardness:	38-44 HRC
Standard :	As Per ISO-7379-1983
Surface Treatment :	Black Oxide
Class of Thread :	5g6g



Code	d1	d2	d3	W	L1	L2	k	Stock
VC2.1/ 067					50			•
VC2.1/ 068					55			•
VC2.1/ 069					60			•
VC2.1/ 070					65			•
VC2.1/ 071					70			•
VC2.1/ 072					75			•
VC2.1/ 073					80			•
VC2.1/ 074					85			•
VC2.1/ 075					90			•
VC2.1/ 076					95			•
VC2.1/ 077	16	M12	24	8	100	18	11	•
VC2.1/ 078					105			•
VC2.1/ 079					110			•
VC2.1/ 080					115			•
VC2.1/ 081					120			•
VC2.1/ 082					125			•
VC2.1/ 083					130			•
VC2.1/ 084					135			•
VC2.1/ 085					140			•
VC2.1/ 086					145			•
VC2.1/ 087					150			•
VC2.1/ 088					40			•
VC2.1/ 089					45			•
VC2.1/ 090					50			•
VC2.1/ 091					55			•
VC2.1/ 092					60			•
VC2.1/ 093	20	M16	30	10	65	22	14	•
VC2.1/ 094					70			•
VC2.1/ 095					75			•
VC2.1/ 096					80			•
VC2.1/ 097					85			•
VC2.1/ 098					90			•
VC2.1/ 099					95			•

Code	d1	d2	d3	W	L1	L2	k	Stock
VC2.1/ 100					100			•
VC2.1/ 101					105			•
VC2.1/ 102					110			•
VC2.1/ 103					115			•
VC2.1/ 104					120			•
VC2.1/ 105	20	M16	30	10	125	22	14	•
VC2.1/ 106					130			•
VC2.1/ 107					135			•
VC2.1/ 108					140			•
VC2.1/ 109					145			•
VC2.1/ 110					150			•
VC2.1/ 111					50			•
VC2.1/ 112					55			•
VC2.1/ 113					60			•
VC2.1/ 114					65			•
VC2.1/ 115					70			•
VC2.1/ 116					75			•
VC2.1/ 117					80			•
VC2.1/ 118					85			•
VC2.1/ 119					90			•
VC2.1/ 120					95			•
VC2.1/ 121	24	M20	36	12	100	27	16	•
VC2.1/ 122					105			•
VC2.1/ 123					110			•
VC2.1/ 124					115			•
VC2.1/ 125					120			•
VC2.1/ 126					125			•
VC2.1/ 127					130			•
VC2.1/ 128					135			•
VC2.1/ 129					140			•
VC2.1/ 130					145			•
VC2.1/ 131					150			•

✓ - Ex-stock • - Against Order | Ordering Example: Quantity | VC2.1/ 099 - 20 Pcs