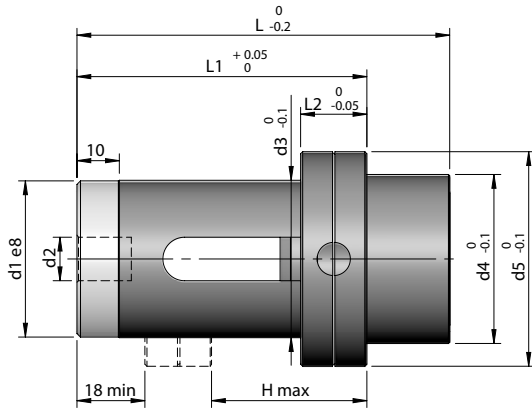


**VC1.9**

Internal Latch Lock



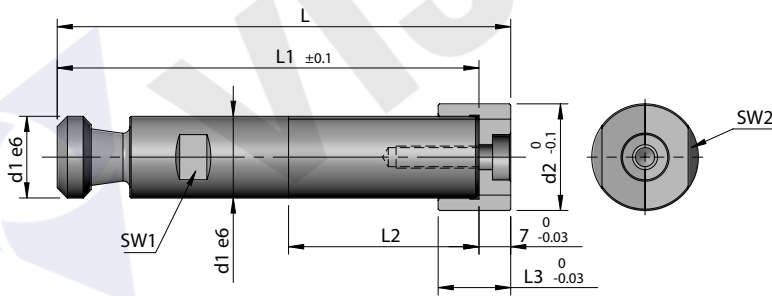
VC

Code	d1	d2	d3	d4	d5	L	L1	L2	H min	H max	Stock
VC1.9/ 001	32	M10	32.2	34.8	44.8	78	60	14	6	28	●
VC1.9/ 002						106	88			56	●
VC1.9/ 003	38	M12	38.2	40.8	51.8	90	70	16	8	36	●
VC1.9/ 004						125	105			71	●

✓ - Ex-stock ● - Against Order | Ordering Example: Code - Quantity | VC1.9/ 004 - 4 Pcs

**VC1.9/1**

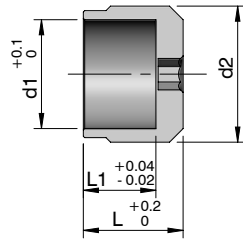
Internal Latch Bar



Code	d1	d2	L	L1	L2	L3	SW1	SW2	Stock
VC1.9/1/ 001	14	18.5	63	56	20	14	12	15	●
VC1.9/1/ 002			80	73	●				
VC1.9/1/ 003			100	93	●				
VC1.9/1/ 004			125	118	●				
VC1.9/1/ 005	18	23.5	80	73	20	16	15	19	●
VC1.9/1/ 006			100	93	●				
VC1.9/1/ 007			125	118	●				
VC1.9/1/ 008			140	133	●				

✓ - Ex-stock ● - Against Order | Ordering Example: Code - Quantity | VC1.9/1/ 008 - 20 Pcs

**VC1.9/2**  
Threaded Bush



Code	d1	d2	L	L1	Stock
VC1.9/2/ 001	19	M24 x 1	20	14	•
VC1.9/2/ 002	24	M30 x 1.5	22	16	•

√ - Ex-stock • - Against Order | Ordering Example: Code - Quantity | VC1.9/2/ 002 - 20 Pcs

**VC**

**Example of using Round Latch Lock for actuating Cavity Side Ejection**

