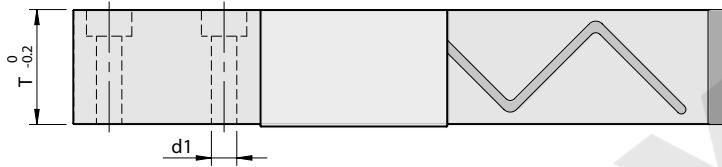
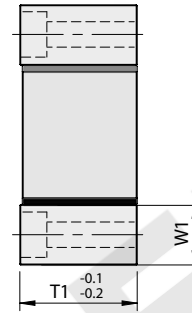
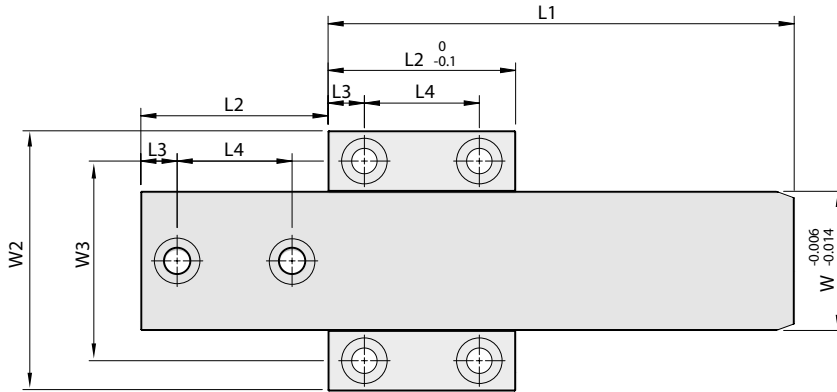


**VB6.10**

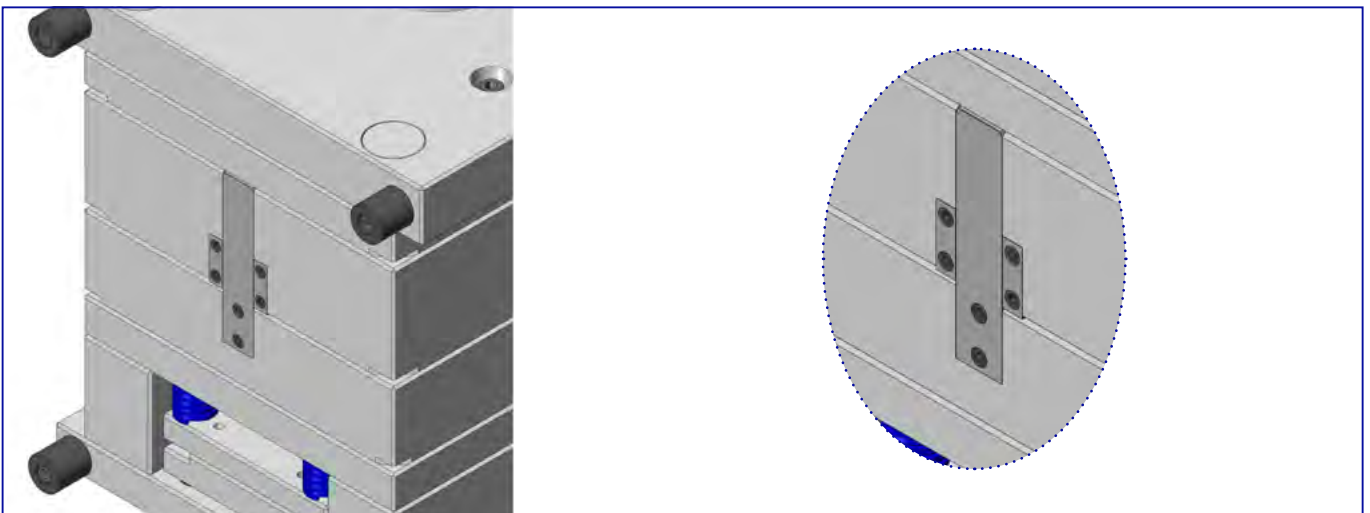
**Guide Bar**

Bar:  
Raw Material: 1.2842  
Hardness: 56 HRC  
Guide:  
Raw Material: 1.2162  
Hardness: 60 HRC



Code	L1	L2	L3	L4	W	W1	W2	W3	T	T1	d1	Stock
VB6.10/ 001	44	26	6	14	16	10	36	26	14	14.2	4.5	•
VB6.10/ 002	54	26	6	14	16	10	36	26	14	14.2	4.5	•
VB6.10/ 003	64	26	6	14	16	10	36	26	14	14.2	4.5	•
VB6.10/ 004	54	34	8	18	25	12	49	37	22	22.3	5.5	•
VB6.10/ 005	74	34	8	18	25	12	49	37	22	22.3	5.5	•
VB6.10/ 006	94	34	8	18	25	12	49	37	22	22.3	5.5	•
VB6.10/ 007	54	44	8	28	34	16	66	50	30	30.5	6.5	•
VB6.10/ 008	94	44	8	28	34	16	66	50	30	30.5	6.5	•
VB6.10/ 009	134	44	8	28	34	16	66	50	30	30.5	6.5	•
VB6.10/ 010	174	44	8	28	34	16	66	50	30	30.5	6.5	•
VB6.10/ 011	74	62	12	38	46	20	86	66	38	38.8	8.5	•
VB6.10/ 012	114	62	12	38	46	20	86	66	38	38.8	8.5	•

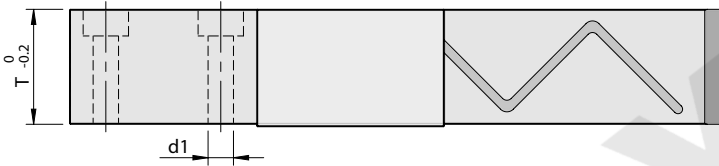
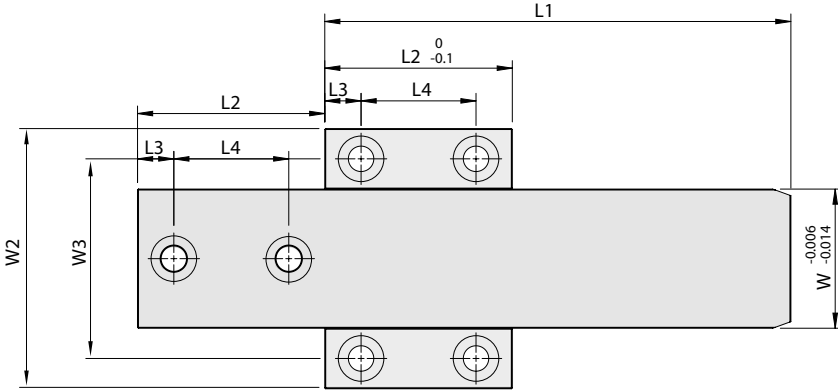
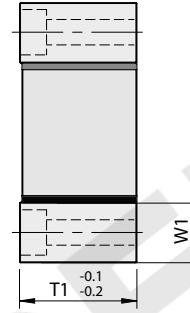
✓ - Ex-stock • - Against Order | Ordering Example: Code - Quantity | VB6.10/ 012- 4 Pcs



**VB6.10**

**Guide Bar**

Bar:  
Raw Material:1.2842  
Hardness:56 HRC  
Guide:  
Raw Material:1.2162  
Hardness:60 HRC



Code	L1	L2	L3	L4	W	W1	W2	W3	T	T1	d1	Stock
VB6.10/ 013	154	62	12	38	46	20	86	66	38	38.8	8.5	•
VB6.10/ 014	194	62	12	38	46	20	86	66	38	38.8	8.5	•
VB6.10/ 015	94	80	16	48	60	25	110	85	50	51.2	10.5	•
VB6.10/ 016	134	80	16	48	60	25	110	85	50	51.2	10.5	•
VB6.10/ 017	174	80	16	48	60	25	110	85	50	51.2	10.5	•
VB6.10/ 018	214	80	16	48	60	25	110	85	50	51.2	10.5	•
VB6.10/ 019	254	80	16	48	60	25	110	85	50	51.2	10.5	•
VB6.10/ 020	114	98	20	58	80	32	144	112	70	71.6	12.5	•
VB6.10/ 021	154	98	20	58	80	32	144	112	70	71.6	12.5	•
VB6.10/ 022	194	98	20	58	80	32	144	112	70	71.6	12.5	•
VB6.10/ 023	234	98	20	58	80	32	144	112	70	71.6	12.5	•
VB6.10/ 024	274	98	20	58	80	32	144	112	70	71.6	12.5	•
VB6.10/ 025	314	98	20	58	80	32	144	112	70	71.6	12.5	•

✓ - Ex-stock • - Against Order | Ordering Example: Code - Quantity | VB6.10/ 025 - 4 pcs

